

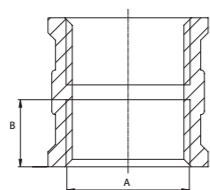


ACCESORIOS LATÓN PARA ROSCAR



ACCESORIOS DE LATÓN PARA ROSCAR

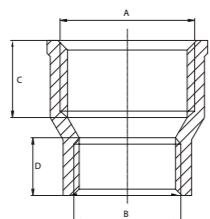
UNIÓN HEMBRA



Referencia	A	B	Peso	Bolsa	📦	📦
MU38	G3/8"	9,0	20	25	50	400
MU12	G1/2"	10,0	31	25	30	240
MU34	G3/4"	12,0	45	10	25	200
MU1	G1"	14,5	90	10	20	160
MU114	G1-1/4"	18,0	155	1	8	64
MU112	G1-1/2"	18,0	230	1	6	48
MU2	G2"	22,0	265	1	-	40
MU212	G2-1/2"	29,5	409	1	-	30
MU3	G3"	32,3	560	1	-	20

∅ mm g uds. uds. uds.

UNIÓN REDUCIDO HEMBRA



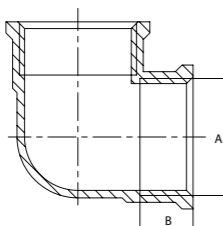
Referencia	A	B	C	D	Peso	Bolsa	📦	📦
MUR1238	G1/2" - G3/8"	12,2	10,0	47	25	50	400	
MUR3412	G3/4" - G1/2"	13,5	12,2	62	10	25	200	
MUR112	G1" - G1/2"	16,0	12,2	71	10	20	160	
MUR134	G1" - G3/4"	16,0	13,5	87	10	20	160	
MUR1141	G1-1/4" - G1"	18,0	16,0	135	1	10	80	
MUR112114	G1-1/2" - G1-1/4"	18,0	18,0	152	1	8	64	
MUR21	G2" - G1"	20,0	16,0	233	1	8	64	
MUR2114	G2" - G1-1/4"	20,0	18,0	227	1	8	64	
MUR2112	G2" - G1-1/2"	20,0	19,0	268	1	8	48	
MUR212112	G2-1/2" - G1-1/2"	24,0	19,0	400	1	-	40	
MUR2122	G2-1/2" - G2"	24,0	21,0	390	1	-	25	
MUR3114	G3" - G1-1/4"	26,0	18,0	483	1	-	20	
MUR3112	G3" - G1-1/2"	26,0	19,0	457	1	-	20	
MUR32	G3" - G2"	26,0	21,0	382	1	-	18	
MUR3212	G3" - G2-1/2"	26,0	25,0	618	1	-	20	

∅ mm mm g uds. uds. uds.

CODO HEMBRA



● CROMADO

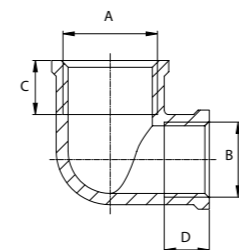


Referencia	A	B	Peso	Bolsa	📦	📦
CH38	3/8"	9,0	35	25	50	400
CH12	1/2"	10,0	39	10	30	240
CH34	3/4"	12,0	79	10	25	200
CH1	1"	14,5	136	10	15	120
CH114	1 1/4"	17,0	207	1	6	48
CH112	1 1/2"	18,0	293	1	-	50
CH2	2"	20,5	400	1	-	25
CH212	2 1/2"	18,0	736	1	-	15
CH3	3"	23,0	1240	1	-	6
● CH12CR	1/2"	10,0	39	10	30	240

∅ mm g uds. uds. uds.

ACCESORIOS DE LATÓN PARA ROSCAR

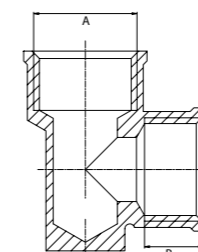
CODO REDUCIDO HEMBRA



Referencia	A	B	C	D	Peso	Bolsa	📦	📦
CHR1238	1/2" - 3/8"	11,5	10,0	58	10	30	240	
CHR3412	3/4" - 1/2"	12,0	11,5	82	10	20	160	
CHR121	1" - 1/2"	14,5	11,5	100	10	15	120	
CHR134	1" - 3/4"	14,5	12,0	112	10	15	120	

∅ mm mm g uds. uds. uds.

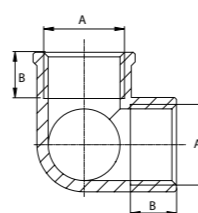
CODO HEMBRA CON SOPORTE



Referencia	A	B	Peso	Bolsa	📦	📦
CSH12	1/2"	14	72	10	20	160

∅ mm g uds. uds. uds.

CODO TRES VÍAS HEMBRA



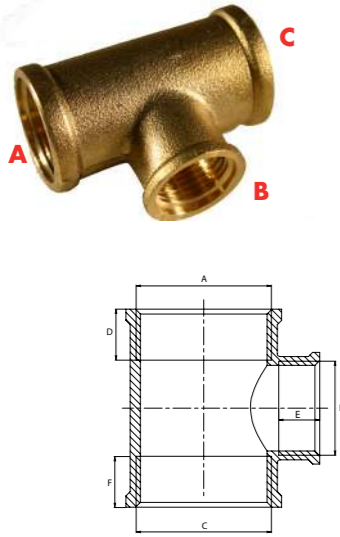
Referencia	A	B	Peso	Bolsa	📦	📦
C3V12	1/2"	12	88	10	15	120
C3V34	3/4"	12	121	10	8	64

∅ mm g uds. uds. uds.

ACCESORIOS DE LATÓN PARA ROSCAR

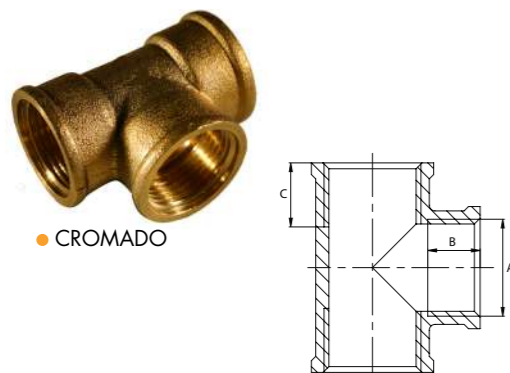
ACCESORIOS DE LATÓN PARA ROSCAR

TE REDUCIDA



Referencia	A	B	C	D	E	F	Peso	Bolsa	📦	📦
TER123812	1/2"	3/8"	1/2"	14,0	9,0	14,0	75	10	20	160
TER341234	3/4"	1/2"	3/4"	14,0	10,0	14,0	131	10	15	120
TER343412	3/4"	3/4"	1/2"	14,0	11,0	10,0	237	10	10	80
TER1121	1"	1/2"	1"	14,5	10,0	14,5	195	5	10	80
TER1341	1"	3/4"	1"	14,5	11,0	14,5	211	5	8	64
TER11412114	1 1/4"	1/2"	1 1/4"	16,0	10,0	16,0	220	1	5	40
TER11434114	1 1/4"	3/4"	1 1/4"	16,0	11,0	16,0	215	1	5	40
TER1141114	1 1/4"	1"	1 1/4"	16,0	14,5	16,0	238	1	5	40
TER11212112	1 1/2"	1/2"	1 1/2"	18,0	10,0	18,0	257	1	5	40
TER11234112	1 1/2"	3/4"	1 1/2"	18,0	11,0	18,0	250	1	5	40
TER1121112	1 1/2"	1"	1 1/2"	18,0	14,5	18,0	257	1	-	40
TER11211412	1 1/2"	1 1/4"	1 1/2"	18,0	16,0	18,0	275	1	-	30
TER2122	2"	1/2"	2"	18,0	10,0	18,0	378	1	-	20
TER2342	2"	3/4"	2"	18,0	11,0	18,0	421	1	-	20
TER212	2"	1"	2"	18,0	14,5	18,0	367	1	-	20
TER21142	2"	1 1/4"	2"	18,0	16,0	18,0	373	1	-	20
TER21122	2"	1 1/2"	2"	18,0	18,0	18,0	410	1	-	20
TER21234212	2 1/2"	3/4"	2 1/2"	18,5	11,0	18,5	1023	1	-	12
TER2121212	2 1/2"	1"	2 1/2"	18,5	14,5	18,5	958	1	-	7
TER212114212	2 1/2"	1 1/4"	2 1/2"	18,5	11,0	18,5	887	1	-	12
TER212112212	2 1/2"	1 1/2"	2 1/2"	18,5	18,0	18,5	1023	1	-	12
TER2122212	2 1/2"	2"	2 1/2"	18,5	18,0	18,5	850	1	-	10
TER313	3"	1"	3"	22,5	14,5	22,5	1436	1	-	6
TER31143	3"	1 1/4"	3"	22,5	11,0	22,5	1402	1	-	6
TER31123	3"	1 1/2"	3"	22,5	18,0	22,5	1341	1	-	6
TER323	3"	2"	3"	22,5	18,0	22,5	1177	1	-	6

TE

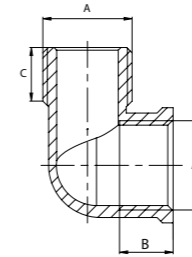


Referencia	A	B	C	Peso	Bolsa	📦	📦
TE38	3/8"	9,0	11,0	43	25	25	200
TE12	1/2"	10,0	14,0	60	10	20	160
TE34	3/4"	11,0	14,0	106	10	10	80
TE1	1"	14,5	14,5	184	10	10	80
TE112	1 1/2"	18,0	18,0	412	1	-	30
● TE12CR	1/2"	10,0	14,0	60	1	25	200

CODO MACHO/HEMBRA



● CROMADO

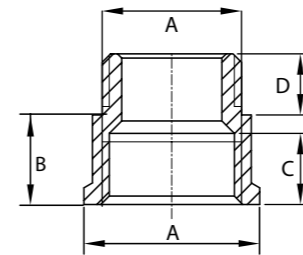


Referencia	A	B	C	Peso	Bolsa	📦	📦
CMH38	3/8"	10,0	10,0	31	25	50	400
CMH12	1/2"	11,0	11,0	48	10	30	240
CMH34	3/4"	12,0	12,0	74	10	25	200
CMH1	1"	14,5	13,0	124	10	10	80
CMH114	1 1/4"	16,0	16,0	221	1	6	48
CMH2	2"	20,5	20,0	450	1	-	25
CMH212	2 1/2"	24,0	20,0	752	1	-	15
CMH3	3"	24,5	22,0	1600	1	-	8
● CMH38CR	3/8"	10,0	10,0	31	10	50	400
● CMH12CR	1/2"	11,0	11,0	48	10	30	240

RACOR MARSELLA

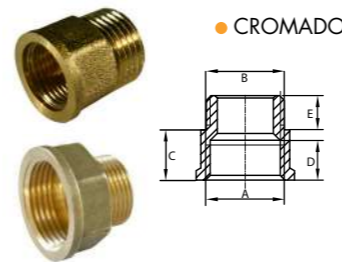


● CROMADO



Referencia	A	B	C	D	Peso	Bolsa	📦	📦
RM38	G3/8"	10,7	8,5	7,3	18	25	75	600
RM12	G1/2"	12,0	10,0	9,5	28	25	80	640
RM122	G1/2"	21,5	19,0	9,5	47	1	50	400
RM123	G1/2"	30,0	28,0	10,0	60	25	40	320
RM34	G3/4"	14,5	12,0	11,5	47	25	40	320
RM1	G1"	17,0	14,5	12,5	76	10	25	200
RM114	G1-1/4"	19,0	16,0	17,0	153	1	10	80
RM112	G1-1/2"	21,0	18,0	19,0	195	1	8	64
● RM38CR	G3/8"	10,7	8,5	7,3	18	25	75	600
● RM12CR	G1/2"	12,0	10,0	9,5	28	25	80	640
● RM34CR	G3/4"	14,5	12,0	11,5	47	25	40	320
● RM1CR	G1"	17,0	14,5	12,5	76	10	25	200

RACOR MARSELLA REDUCIDO

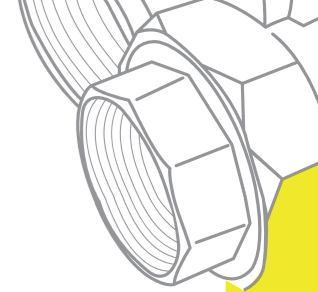


● CROMADO

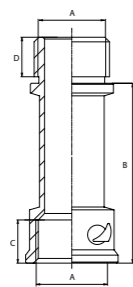
Referencia	A	B	C	D	E	Peso	Bolsa	📦	📦
RMR3812	G3/8"	G1/2"	12,0	10,0	11,0	40	25	50	400
● RMR3812CR	G3/8"	G1/2"	12,0	10,0	11,0	40	25	50	400
● RMR1234CR	G1/2"	G3/4"	13,0	11,5	12,0	51	25	40	320
RMRH12M38	G1/2"	G3/8"	13,0	11,5	9,0	28	25	60	480
RMRH34M12	G3/4"	G1/2"	13,5	12,0	10,5	47	25	40	320
RMRH1M34	G1"	G3/4"	16,0	14,5	12,0	69	10	20	160

ACCESORIOS DE LATÓN PARA ROSCAR

ACCESORIOS DE LATÓN PARA ROSCAR



● CROMADO



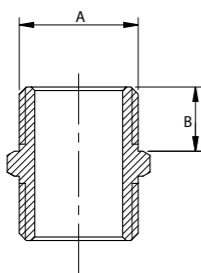
ALARGADERA

Referencia	A	B	C	D	Peso	📦	📦
ALA12	1/2"	50	12,0	11,0	60	30	240
ALA34	3/4"	50	13,0	12,0	80	15	120
● ALA12CR	1/2"	50	12,0	11,0	60	30	240
● ALA34CR	3/4"	50	13,0	12,0	80	15	120
● ALA1012CR	1/2"	100	10,5	9,0	81	15	120

∅ mm mm mm g uds. uds.



● CROMADO



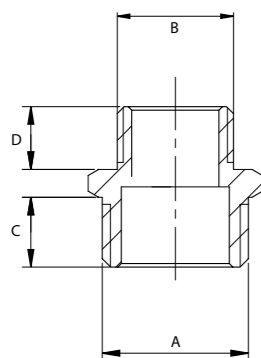
MACHÓN

Referencia	A	B	Peso	Bolsa	📦	📦
MA38	G3/8"	9,0	18	25	100	800
MA12	G1/2"	10,0	30	25	100	800
MA34	G3/4"	11,0	41	25	50	400
MA1	G1"	14,2	78	10	25	200
MA112	G1-1/2"	17,0	169	1	8	64
MA2	G2"	20,0	323	1	6	48
MA3	G3"	24,0	648	1	-	30
● MA38CR	G3/8"	9,0	16	25	100	800
● MA12CR	G1/2"	10,0	30	25	80	640
● MA34CR	G3/4"	11,0	41	25	50	400

∅ mm g uds. uds. uds.



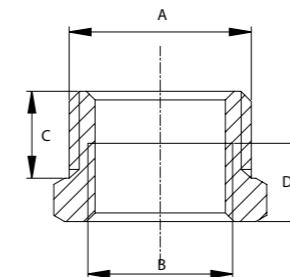
● CROMADO



MACHÓN REDUCIDO

Referencia	A	B	C	D	Peso	Bolsa	📦	📦
MAR1238	G1/2" - G3/8"	10,0	9,0	21	25	100	800	
MAR3412	G3/4" - G1/2"	11,0	10,0	65	25	50	400	
MAR134	G1" - G3/4"	14,2	11,0	56	10	25	200	
MAR1141	G1-1/4" - G1"	16,0	14,2	95	1	15	120	
MAR1121	G1-1/2" - G1"	17,0	14,2	125	1	10	80	
MAR112114	G1-1/2" - G1-1/4"	17,0	16,0	154	1	10	80	
MAR21	G2" - G1"	20,0	14,2	204	1	10	80	
MAR2114	G2" - G1-1/4"	20,0	16,0	321	1	6	48	
MAR2112	G2" - G1-1/2"	20,0	17,0	212	1	6	48	
MAR2121	G2-1/2" - G1"	20,0	16,0	351	1	6	48	
MAR212114	G2-1/2" - G1-1/4"	20,0	17,0	326	1	5	40	
MAR212112	G2-1/2" - G1-1/2"	20,0	17,0	393	1	5	40	
MAR2122	G2-1/2" - G2"	20,0	20,0	362	1	-	40	
MAR31	G3" - G1"	24,0	14,2	562	1	-	30	
MAR3114	G3" - G1-1/4"	24,0	16,0	440	1	-	30	
MAR3112	G3" - G1-1/2"	24,0	17,0	460	1	-	30	
MAR3212	G3" - G2-1/2"	24,0	20,0	464	1	-	30	
● MAR1238CR	1/2" - G3/8"	10,0	9,0	21	25	50	400	
● MAR3412CR	3/4" - G1/2"	11,0	10,0	65	25	50	400	

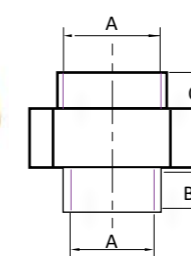
∅ ∅ mm mm g uds. uds. uds.



TUERCA REDUCIDA

Referencia	A	B	C	D	Peso	Bolsa	📦	📦
TRM12H38	1/2" - 3/8"	10,0	9,0	19,5	25	50	400	
TRM1H12	1" - 1/2"	12,0	11,5	72	10	50	400	
TRM1H34	1" - 3/4"	12,0	11,5	46,5	10	50	400	
TRM114H12	1 1/4" - 1/2"	17,0	11,5	100	1	25	200	
TRM114H34	1 1/4" - 3/4"	17,0	11,5	97	1	25	200	
TRM112H12	1 1/2" - 1/2"	17,0	11,5	148	1	20	160	
TRM112H34	1 1/2" - 3/4"	17,0	11,5	133	1	20	160	
TRM112H114	1 1/2" - 1 1/4"	17,0	16,0	89	1	20	160	
TRM2H34	2" - 3/4"	20,0	11,5	199	1	10	80	
TRM2H114	2" - 1 1/4"	20,0	16,0	208	1	10	80	
TRM212H34	2 1/2" - 3/4"	20,0	11,5	341	1	8	64	
TRM212H1	2 1/2" - 1"	20,0	14,5	376	1	8	64	
TRM212H114	2 1/2" - 1 1/4"	20,0	16,0	369	1	8	64	
TRM212H112	2 1/2" - 1 1/2"	20,0	18,0	311	1	8	64	
TRM3H1	3" - 1"	23,0	14,5	456	1	-	40	
TRM3H114	3" - 1 1/4"	23,0	16,0	464	1	-	40	
TRM3H2	3" - 2"	23,0	19,0	437	1	-	40	
TRM3H212	3" - 2 1/2"	23,0	20,0	392	1	-	40	

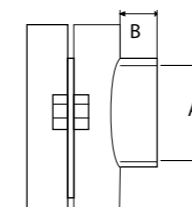
∅ ∅ mm mm g uds. uds. uds.



TUERCA UNIÓN 3 PIEZAS HEMBRA

Referencia	A	B	C	D	Bolsa	📦	📦
TU3HH112	1 1/2"	19,0	17,0	480	-	-	30
TU3HH2	2"	20,0	19,0	687	-	-	20

∅ mm mm g uds. uds. uds.



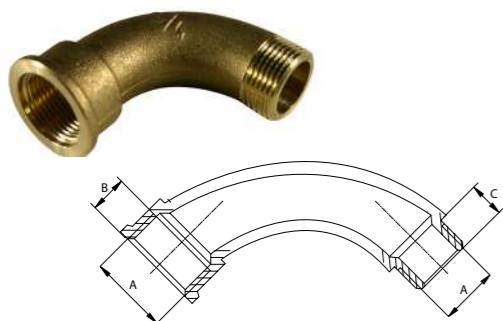
COLLARÍN

Referencia	Para	A	B	Peso	📦	📦
COLL2012	20	1/2"	11,0	151	15	120
COLL3234	32	3/4"	14,0	300	8	64
COLL4012	40	1/2"	11,0	349	5	40
COLL501	50	1"	16,0	361	5	40

∅ ∅ mm g uds. uds.

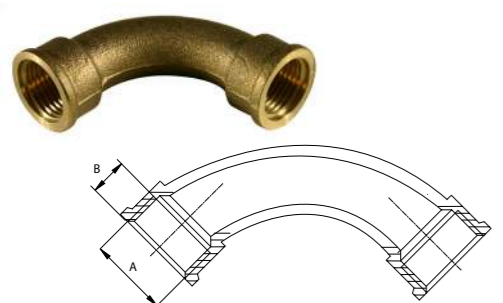
ACCESORIOS DE LATÓN

CURVA MACHO/HEMBRA



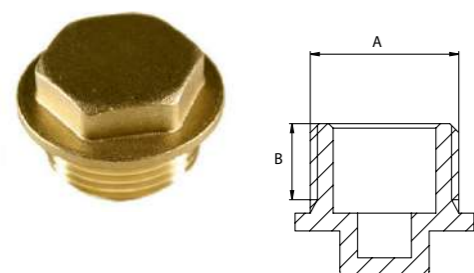
Referencia	A	B	C	Peso		
CUMH12	1/2"	12,0	12,0	118	15	120
CUMH34	3/4"	14,5	12,5	180	10	80
CUMH1	1"	19,0	15,5	319	5	40
CUMH114	1 1/4"	23,0	20,5	483	-	10
CUMH112	1 1/2"	18,5	22,0	646	-	10
CUMH2	2"	25,0	28,5	1212	-	10
CUMH212	2 1/2"	26,0	28,0	2038	-	4
CUMH3	3"	27,0	28,0	2981	-	2
	∅	mm	mm	g	uds.	uds.

CURVA HEMBRA



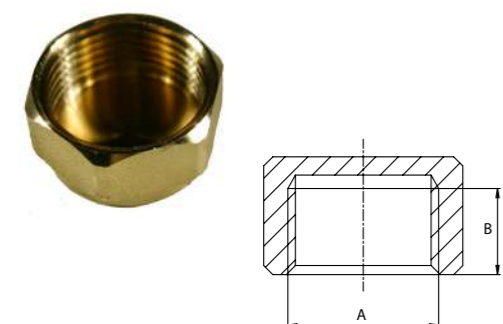
Referencia	A	B	Peso		
CUH12	1/2"	12,0	133	15	120
CUH34	3/4"	14,5	254	10	80
CUH1	1"	19,0	325	5	40
CUH114	1 1/4"	23,0	600	-	10
CUH112	1 1/2"	18,5	729	-	10
CUH2	2"	25,0	1158	-	10
CUH212	2 1/2"	26,0	1881	-	4
CUH3	3"	27,0	3009	-	2
	∅	mm	g	uds.	uds.

TAPÓN MACHO



Referencia	A	B	Peso	Bolsa		
TAPM38	3/8"	10,0	17	25	100	800
TAPM12	1/2"	9,0	20	25	100	800
TAPM34	3/4"	13,0	35	25	50	400
TAPM1	1"	14,0	57	10	30	240
TAPM112	1 1/2"	17,0	116	-	20	160
TAPM212	2 1/2"	20,0	329	-	8	64
TAPM3	3"	20,0	438	-	1	50
	∅	mm	g	uds.	uds.	uds.

TAPÓN HEMBRA



Referencia	A	B	Peso		
TAPH38	3/8"	11,0	19	100	800
TAPH12	1/2"	12,0	21	80	640
TAPH34	3/4"	13,0	39	50	400
TAPH1	1"	14,5	68	50	400
TAPH114	1 1/4"	16,0	94	25	200
TAPH112	1 1/2"	18,0	112	20	160
TAPH2	2"	20,5	182	10	80
TAPH3	3"	20,5	412	1	50
	∅	mm	g	uds.	uds.

